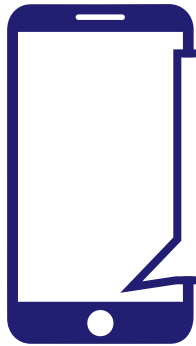


ISWAN Insights: Spotlight on Q1 2023

1 January – 31 March 2023



1,217 new calls and messages to ISWAN's helplines (i.e. the first contact in a new case)
▼ **16%** compared to last quarter

2,970 
seafarers and family members assisted by ISWAN
▼ **17%** compared to last quarter

Key trend

REPORT



ABUSE

▲ **45%**

contacts related to **abuse, bullying, harassment and discrimination** since last quarter across all ISWAN helplines:

19%

of these contacts involved sexual abuse or harassment



Majority of cases related to abusive or bullying behaviour by senior officers



▲ **38%**

contacts related to abuse, bullying, harassment and discrimination since last quarter



▲ **125%**

contacts related to abuse, bullying, harassment and discrimination since last quarter